

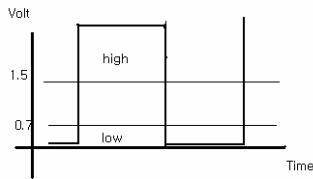
SCONI -2400

1. SCONI-2400 Series Pulse Converter 가

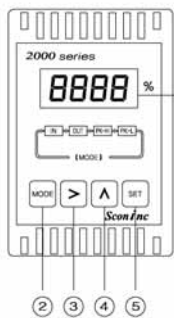
- 2.1 (RANGE)
- 2.1.1 LOW LEVEL : 0.7V DC
 - 2.1.2 HIGH LEVEL : 1.5V DC
 - 2.1.3 MAX HIGH : 30V DC
 - 2.1.4 : 150K
 - 2.1.5 RAGNE

RANGE CODE		RANGE
RANGE 1	0.000~1.000Hz	0.100Hz
RANGE 2	0.000~9.999Hz	1.00Hz
RANGE 3	0.00~99.99Hz	10.0Hz
RANGE 4	0.0~999.9Hz	100Hz
RANGE 5	0.000~9.999kHz	1.000Hz
RANGE 6	0.00~40.00kHz	10.00Hz

2.1.6



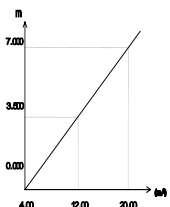
3.



① " MODE " Key- data
Operation Menu
" " Key-
" " Key-
SET " mode

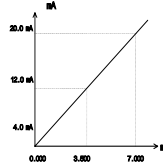
4. 4.1 Display Scaling (H-SC, OR L-SC) Scale Range Display

) 가 0~10HZ 0~7.00t/h



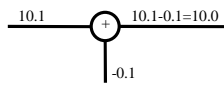
RANGE CODE : 3 (0~99.99Hz)
HIGH RANGE : 10.00Hz
LOW RANGE : 0.00Hz
HIGH SCALE : 7.000
LOW SCALE : 0.000

4.2 Scaling (H-OT OR L-OT)
scale 4~20mA 가
) Display 가 0.000~7.000t/h 4~20mA



High out Scale : 7.000
Low out Scale : 0.000

4.3 Sensor (S-AD)



가 가
가
Sensor = 10.1 t/h
Sensor = + ()
= 10.1 + (-0.1) = 10.0 t/h

4.4

4.4.1 ALARM (AL-T AND ALRM AND ALDB) ALARM

) AL TYPE AL : 500.0 ALARM DEADBAND
0.5
(AL-1) (PV) 500.1
ON 499.5 OFF

4.4.2 PULSE (P-OT)

DIVIDE PULSE

4.5 FILTER (FI LT)

FILTER 4 가

- NONE : FILTER
- AV-4 : 4 SAMPLE
- AV-8 : 8 SAMPLE
- AV-16 : 16 SAMPLE

FILTER

가 FILTER

4.6 Function (FUNC)

4.6.1 **LIN**

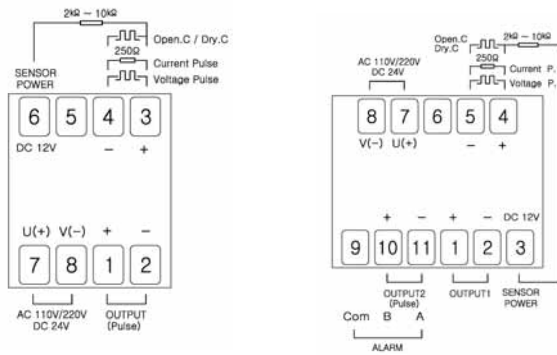
4.6.2 **ROOT**

Orifice

4.6.3 **LIMIT**

Level Zero Zero , Limit

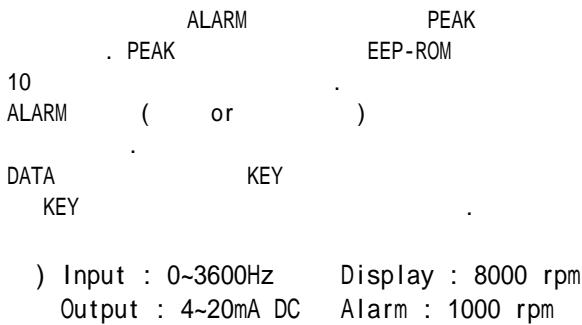
5.



(1 POINT)

(2 POINT)

6. MODE



7. MODE

) Input : 0~3600Hz Display : 8000 rpm
 Output : 4~20mA DC Alarm : 1000 rpm

