

1. Valve Position Indicator

Limit switch box indicator offers clear location of the current valve position by 2 mechanical switches

2. "Quick-Set" Cam

The operating position of the switches can be easily changed by adjusting the high resolution spline cams manually and independently without the need for additional tools (cam closed-up, cam open-down)

3. Easy Wiring

ALS series are equipped with 2 standard conduit entries and 1 terminal strip with 8 point

4. Dual Wire Conduit

ALS10 : Dual 1/2" conduit entries
ALS30 : Dual 3/4" conduit entries

5. Captive Cover Bolts

Designed to be capted into the cover

6. Easy Mounting Bracket

Any actuator for rotary motion can be easily mounted. NAMUR bracket supplied for easy in mounting onto the actuator



ALS10
WEATHERPROOF (IP67)



ALS30
EXPLOSION PROOF (Exd IIC T6)

Ordering Number

Series	Area Classification	Switch Type
ALS	1: Weatherproof	0: 2 SPDT
	3: Explosion Proof	1: Proximity Sensor (PNP/NPN)
		2: 3 SPDT
		3: 4 SPDT (2 DPDT)

Standard Materials of Construction

NAME	NO.	SPECIFICATION
Outer Position Indicator	1	Polycarbonate
Inner Position Indicator	1	Polycarbonate
Housing	2	Die-Casting Aluminum
Shaft (stem)	1	304 Stainless Steel
Mechanical Switch	2	Used in UL CSA approved
Inserts	2	Bronze
O-Ring	4	Nitrile (Rubber)
Cam	2	Polycarbonate (open/close)
Spring	1	304 Stainless Steel
Cover Screws	4	304 Stainless Steel
Terminal Strip	1	Polyethylene

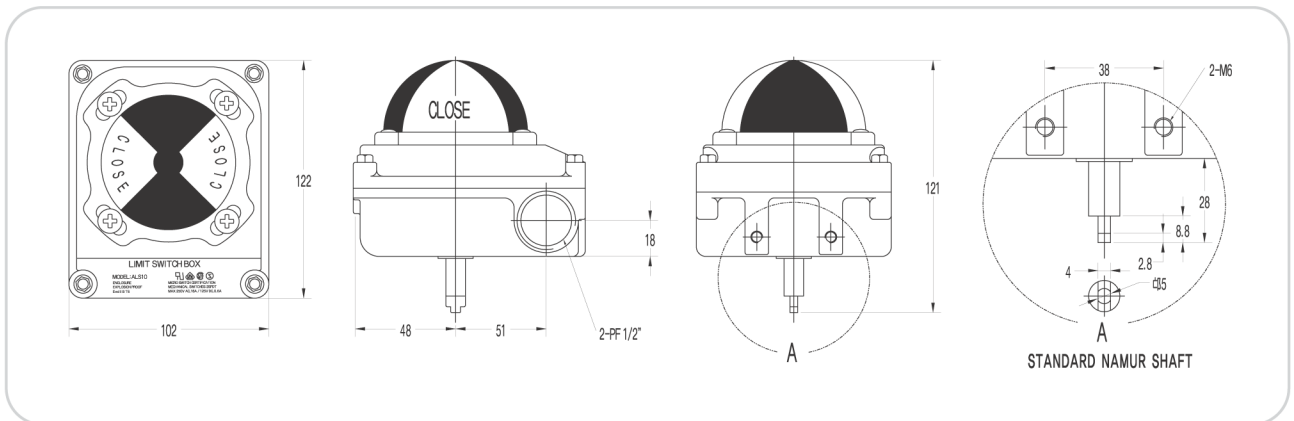
Specification

Description	Series	
	ALS10	ALS30
Model	ALS10	ALS30
Ambient Temperature	-20°C to 85°C (-4°F to 185°F)	
Cable Entry	2 × 1/2" PF (PT) (NPT) (M20 × 1P/1.5P)	2 × 3/4" PF (PT) (NPT)
Terminal Block	8 Points	
Position Indicator	0° to 90° (Red for Close / Yellow for Open)	
Switch Type	2 SPDT Mechanical Switches (Proximity Sensors)	
Painting	Polyester Powder Coating with Black Color	
Bracket	Plastic / Steel	
Certificate	IP67	Exd IIC T6 (IP66)

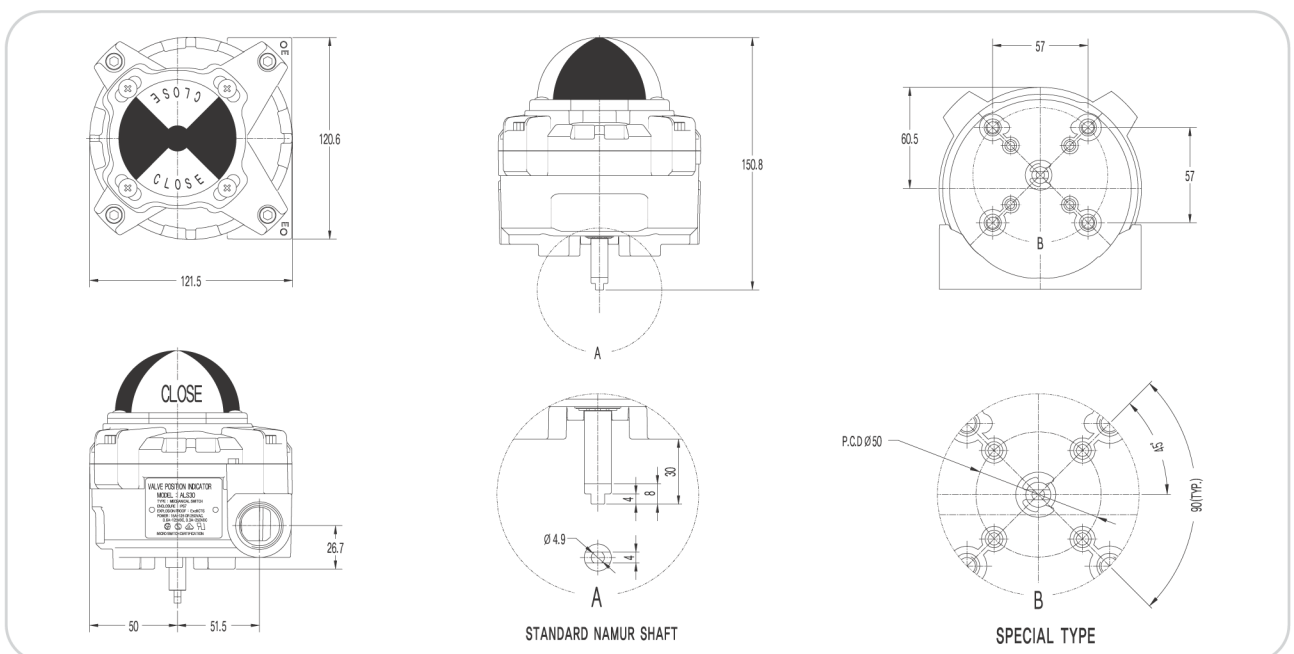
* () option

Dimension

ALS10 Weather prof











ALS30 Explosion Proof



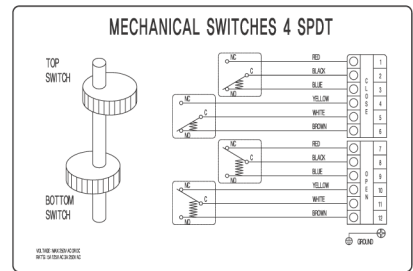
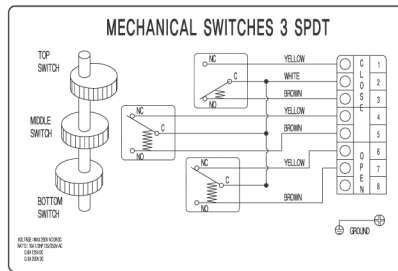
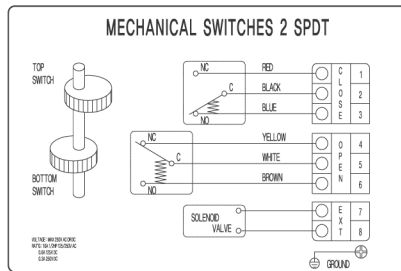
■ Mounting Bracket

1 NAMUR standard bracket is supplied together with 1 limit switch box as standard

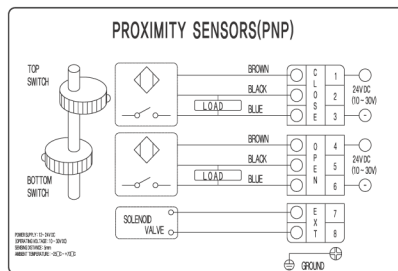
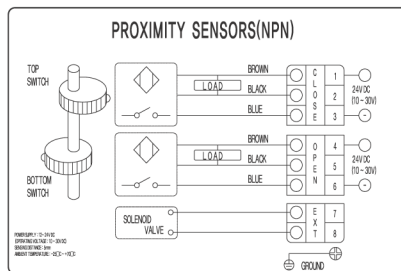
Model	Bracket	Material	Size	Model	Bracket	Material	Size
	P1 (ALS10, ALS30)	Plastic (ABS)	30 X 80 H:20		S4 (ALS30)	Steel	30 X 80 H:30
	S1 (ALS10)	Steel	30 X 38 H:20~30		A1 (ALS30)	Aluminium	30 X 80 H:20
	S2 (ALS30)	Steel	30 X 80 H:20		A2 (ALS30)	Aluminium	30 X 80 H:30
	S3 (ALS30)	Steel	30 X 130 H:30		A3 (ALS30)	Aluminium	30 X 130 H:30

Wiring Diagram

Mechanical Switch Type (UL CSA VDE Approved)



Proximity Sensor Type (UL CE Approved)



MECHANICAL SWITCHES

USED IN    APPROVED

- TYPE : MECHANICAL SWITCH
- VOLTAGE : MAX 250V AC OR DC
- CURRENT : 0.6A 125V DC OR 16A 1/2HP
125, 250V AC



AUTOMA

Automatic Valve & Accessories

Automa Co., Ltd.

Automa Bldg. #46-13, Wonmi-Dong, Wonmi-Gu, Bucheon-City, Gyeonggi-Do, Korea

Tel : 82-(0)32-653-6477(Rep.) Fax : 82-(0)32-653-6478

<http://www.automa.co.kr>

@ 2010 Year (No.9)

※ The product is subject to change for technical development and quality improvement without prior notice.